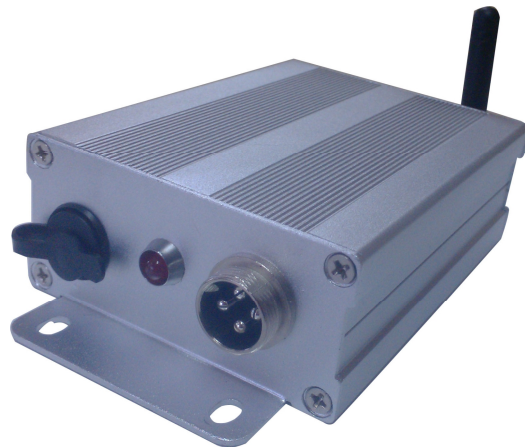


Wireless Transmitter

HY-ATW-A User Manual



Description:

A/D conversion method	Σ - Δ 24bit
Input signal range	-19.8mV~19.8mV
Load cell excitation	DC 5V
Max. connection number of load cell	1~12
Load cell connection mode	4 wire
Operating temperature	-10 °C ~40 °C
Allowable working temperature	-40 °C ~ 70 °C

HY-ATW-A Wireless Transmitter

Wireless transmission frequency	430MHz to 470MHz
Wireless transmission distance	300 meters (in wide place)

Interface:

1- DC charge port:

Inner:+

Outside:-

2- Indicator light: It will light while working.

3- Load cell port:

PIN1	E-	Excitation-
PIN 2	S+	Signal+
PIN 3	S-	Signal-
PIN 4	E+	Excitation+

4- Switch : turns on or off when long press.

5- Antenna.