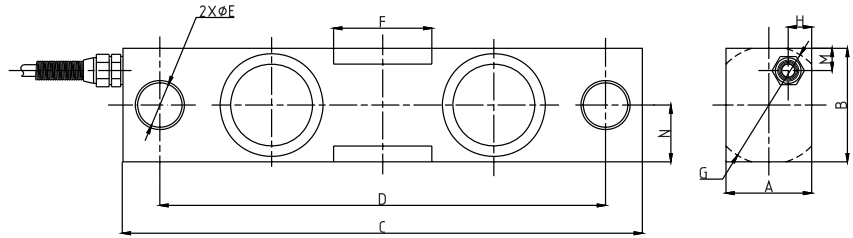


OSF Load cell

OSF

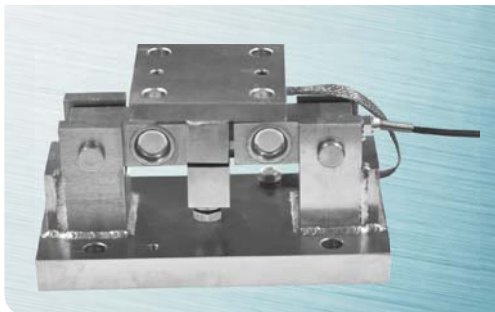


汽车衡、仓储秤等  
Truck scale, warehouse scale

额定载荷(klb)	A	B	C	D	E	F	G	H	M	N
2~5	31	31	190.5	159.1	12.7	30.5	31.5	8	6.5	14.2
10~35	36.6	48.5	222	190.5	19	4.2	1.95	10	9.5	B/2
50~75	62	74.7	342.9	292.1	33.5	82.6	75.9	16	15	B/2

TECHNICAL PARAMETER | 4Wires:Exc+(红,Red);Exc-(黑,Black);Sig+(绿,Green);Sig-(白,White)

额定载荷Rated load	2、3、5、10、15、20、 25、35、50、75klb	绝缘电阻Insulation resistance	≥5000 MΩ
精度等级 Accuracy class	0.05	额定温度 Nominal Temp Range	-10~+40℃
灵敏度Sensitivity	3.0 ± 0.003mV/V	工作温度范围Service Temp Range	-30~+70℃
线性误差 Non-linearity	±0.05%F.S	安全负载Safe load limit	150%F.S
滞后误差 Hysteresis error	±0.05%F.S	破坏负载Breaking load	200%F.S
蠕变 (30分钟) Creep(30min)	±0.02%F.S	额定激励电压Nominal of range excitation	10~12 V DC
零点温度影响TC ZERO	±0.02%F.S/10℃	密封等级Protection Class	IP67
灵敏度温度影响TC SPAN	±0.02%F.S/10℃	材料Material	合金钢 Alloy Steel, 不锈钢Stainless steel
输入阻抗Input resistance	750 ± 10Ω	电缆Cable	Length: 6m(2~5klb),10m(10~35klb),16m(50~75klb)
输出阻抗Output resistance	702 ± 5Ω		Diameter: Φ5(2~5klb), Φ6(10~75klb)



量程	H	H1	H2	L	L1	L2	L3	L4	D	W
2~5klb	130.3	12.7	23	237.3	158.8	95.3	69.9	101.6	14.2	127
10~35klb	200.7	19.1	19.1	304.8	190.5	152.4	152.4	203.2	19.8	203.2
50~75klb	236.2	25	25	412.8	292.1	241.3	165.1	228.6	20	304.8

