

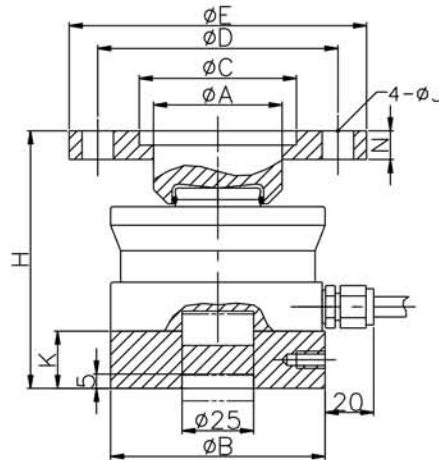
NHS-A/ASS STATIC WEIGHING MODULE (TypeB)



Description

Capacity	10,15,22,33,47,68,100,150
Sensitivity	2.85 ± 0.015mV/V
Accuracy	0.05%F.S,0.1%F.S
Construction	Alloy Steel/Stainless Steel
Protection Class	IP67

Dimensions (Unit: mm)



Capacity (t)	A	B	C	D	E	H	K	J	N
10,15,22	45	75	55	80	100	95	20	11.5	10
33	58	95	68	95	120	120	25	13	12
47	80	130	92	130	170	140	30	17.5	20
68	80	130	92	130	170	150	30	17.5	20
100	100	150	110	150	200	177	40	25	22
150	100	150	110	150	200	187	40	25	22

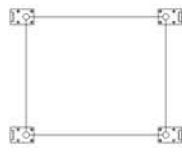
Install Methods



Radial installation

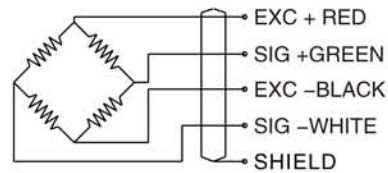


Tangential installation



Rectangle installation

Wiring Diagram



Applications

1. Applies to tank, vessel, hopper scale etc.
2. Process control and batch weighing.

Features

1. Welded seal, high protection class
2. High accuracy class and good stability.
3. Compact configuration and easy installation.
4. Alloy steel and stainless steel version available

Technical Parameter

Sensitivity :	2.85 ± 0.015mV/V	Output impedance:	1402 ± 5 Ω
Accuracy class:	0.05%F.S,0.1%F.S	Operating temperature range:	-30℃~+70℃
Repeatability:	0.02%F.S	Maximum safe overload:	120% F.S
Creep error (30 min):	0.02%F.S	Insulation impedance:	5000M Ω
TCO:	0.02%F.S/10℃	Excitation, recommend:	10V DC (15V Max.)
TC SPAN:	0.02%F.S/10℃	Construction	Alloy Steel/Stainless Steel
Input impedance:	1450 ± 10 Ω	Protection class	IP67

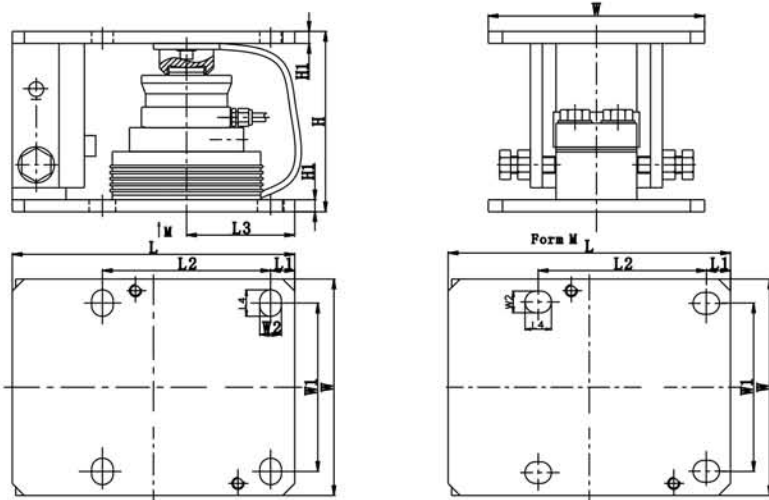
NHS-A/ASS STATIC WEIGHING MODULE (TypeC)



Description

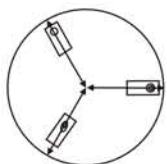
Capacity	10,15,22,33,47,68,100,150
Sensitivity	2.85 ± 0.015mV/V
Accuracy	0.05%F.S,0.1%F.S
Construction	Alloy Steel/Stainless Steel
Protection Class	IP67

Dimensions (Unit: mm)

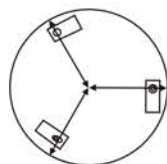


Capacity (t)	L	L1	L2	L3	L4	W	W1	W2	H	H1
10,15,22	235	20	140	90	22	180	140	18	150	8
33	340	35	200	135	26	250	200	22	192	12
47	380	45	230	150	30	280	230	26	230	20
68	380	45	230	150	30	280	230	26	240	20
100	410	35	245	155	30	310	245	26	300	30
150	410	35	245	155	30	310	245	26	310	30

Install Methods

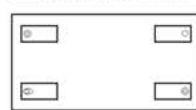


Radial installation



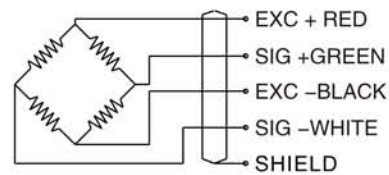
Tangential installation

- Fixed Module
- Float Module
- Semi-float Module



Rectangle installation

Wiring Diagram



Applications

1. Applies to warehouse scale, hopper scale etc

Features

1. Welded seal, high protection class
2. High accuracy class and good stability.
3. Compact configuration and easy installation.
4. Alloy steel and stainless steel version available

Technical Parameter

Sensitivity :	2.85 ± 0.015mV/V	Output impedance:	1402 ± 5 Ω
Accuracy class:	0.05%F.S,0.1%F.S	Operating temperature range:	-30℃~+70℃
Repeatability:	0.02%F.S	Maximum safe overload:	120% F.S
Creep error (30 min):	0.02%F.S	Insulation impedance:	5000M Ω
TCO:	0.02%F.S/10℃	Excitation, recommend:	10V DC (15V Max.)
TC SPAN:	0.02%F.S/10℃	Construction	Alloy Steel/Stainless Steel
Input impedance:	1450 ± 10 Ω	Protection class	IP67

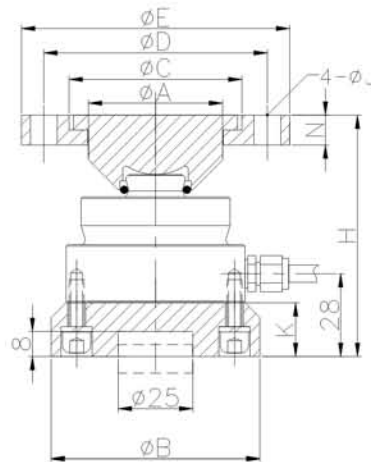
NHS-A/ASS STATIC WEIGHING MODULE (TypeB)



Description

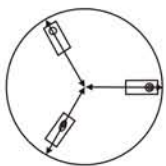
Capacity	1,2,2,3,3,4,7
Sensitivity	2.0 ± 0.002mV/V
Accuracy	C3
Construction	Alloy Steel/Stainless Steel
Protection Class	IP68

Dimensions (Unit: mm)

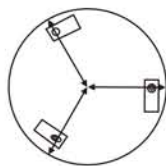


Capacity (t)	A	B	C	D	E	H	K	J	N
1,2,2,3,3,4,7	45	70	55	75	90	81	18	9	10

Install Methods

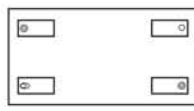


Radial installation



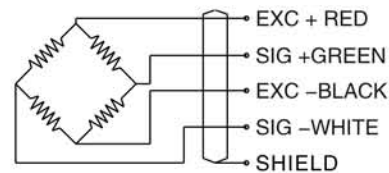
Tangential installation

- Fixed Module
- ⊖ Float Module
- ⊕ Semi-float Module



Rectangle installation

Wiring Diagram



Applications

1. Applies to tank, vessel, hopper scale etc.
2. Process control and batch weighing.

Features

1. Welded seal, high protection class
2. High accuracy class and good stability.
3. Compact configuration and easy installation.
4. Alloy steel and stainless steel version available

Technical Parameter

Sensitivity:	2.85 ± 0.015mV/V	Output impedance:	1402 ± 5 Ω
Accuracy class:	0.05%F.S, 0.1%F.S	Operating temperature range:	-30°C~+70°C
Repeatability:	0.02%F.S	Maximum safe overload:	120% F.S
Creep error (30 min):	0.02%F.S	Insulation impedance:	5000M Ω
TCO:	0.02%F.S/10°C	Excitation, recommend:	10V DC (15V Max.)
TC SPAN:	0.02%F.S/10°C	Construction	Alloy Steel/Stainless Steel
Input impedance:	1450 ± 10 Ω	Protection class	IP67

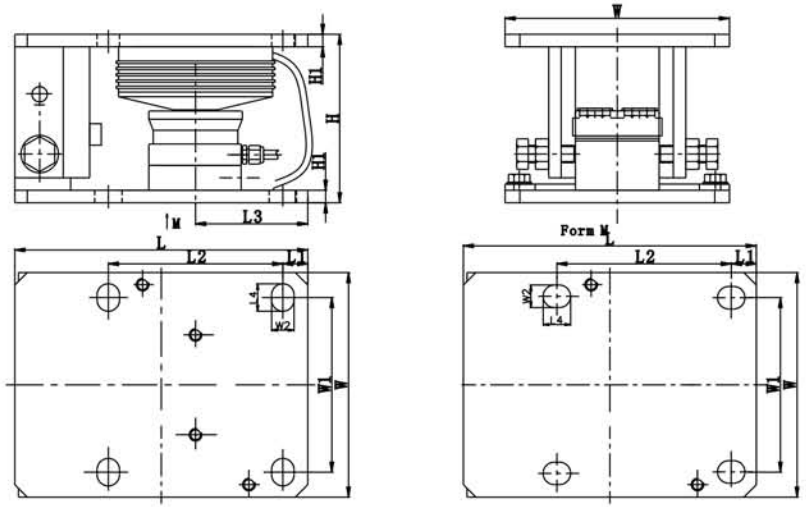
NHS-A/ASS STATIC WEIGHING MODULE (TypeC)



Description

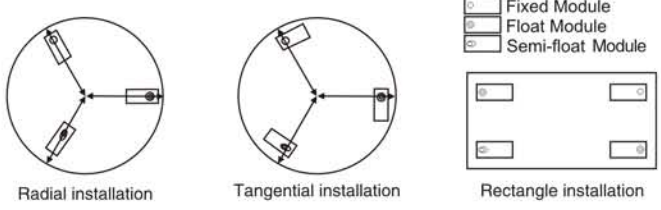
Capacity	1,2,2.2,3,3.3,4,7
Sensitivity	2.0 ± 0.002mV/V
Accuracy	C3
Construction	Alloy Steel/Stainless Steel
Protection Class	IP68

Dimensions (Unit: mm)

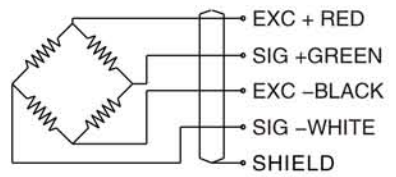


Capacity (t)	L	L1	L2	L3	L4	W	W1	W2	H	H1
1,2,2.2,3,3.3,4,7	200	15	100	65	20	140	100	15	100	8

Install Methods



Wiring Diagram



Applications

1. Applies to tank, vessel, hopper scale etc.
2. Bulk material management.

Features

1. Welded seal, high protection class
2. High accuracy class and good stability.
3. Overload protection.
4. Compact design and easy installation.

Technical Parameter

Sensitivity:	2.85 ± 0.015mV/V	Output impedance:	1402 ± 5 Ω
Accuracy class:	0.05%F.S, 0.1%F.S	Operating temperature range:	-30°C~+70°C
Repeatability:	0.02%F.S	Maximum safe overload:	120% F.S
Creep error (30 min):	0.02%F.S	Insulation impedance:	5000MΩ
TCO:	0.02%F.S/10°C	Excitation, recommend:	10V DC (15V Max.)
TC SPAN:	0.02%F.S/10°C	Construction	Alloy Steel/Stainless Steel
Input impedance:	1450 ± 10 Ω	Protection class	IP67