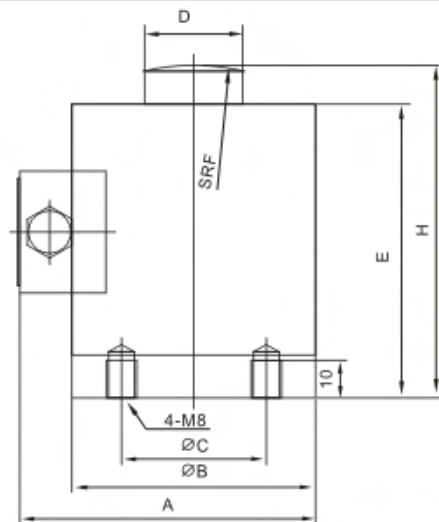




各种专用衡器、测力设备  
Speical scale,tension testing equipment

| 额定载荷(t)<br>Rated Load | H   | A   | B   | C   | D   | E   | F   |
|-----------------------|-----|-----|-----|-----|-----|-----|-----|
| 1,2,3,5               | 88  | 78  | φ64 | φ38 | φ26 | 78  | 80  |
| 10                    | 106 | 88  | φ76 | φ46 | φ34 | 95  | 120 |
| 15,20                 | 130 | 107 | φ88 | φ56 | φ34 | 118 | 120 |



## TECHNICAL PARAMETER

4Wires:Exc+(红,Red);Exc-(黑,Black);Sig+(绿,Green);Sig-(白,White)

|  |                   |                                       |                 |
|--|-------------------|---------------------------------------|-----------------|
| 额定载荷 Rated capacities(E <sub>max</sub> ) | 1,2,3,5,10,15,20t | 温度补偿范围 Temperature range, compensated | -10℃~+40℃       |
| 灵敏度 Sensitivity                          | 2.0±0.005mV/V     | 工作温度范围 Temperature range, operating   | -30~+70℃        |
| 综合误差 Total error                         | ±0.1%F.S          | 安全过载 Maximum safe overload            | 150%F.S         |
| 蠕变(30分钟)Creep error (30min)              | ±0.05%F.S         | 极限过载 Ultimate overload                | 200%F.S         |
| 零点平衡 Zero balance                        | ±1%F.S            | 推荐激励电压 Excitation,recommend           | 10~12V DC       |
| 零点温度影响 TCO                               | ±0.02%F.S/10℃     | 最大激励电压 Excitation,maximum             | 15V DC          |
| 输出温度影响 TC SPAN                           | ±0.02%F.S/10℃     | 防封等级 Protection class                 | IP67            |
| 输入阻抗 Input impedance                     | 400±20Ω           | 材质 Construction                       | 合金钢Alloy Steel  |
| 输出阻抗 Output impedance                    | 352±3Ω            | 电缆 Cable                              | Length:3m       |
| 绝缘电阻 Insulation impedance                | ≥5000MΩ           |                                       | Diameter: φ 5mm |