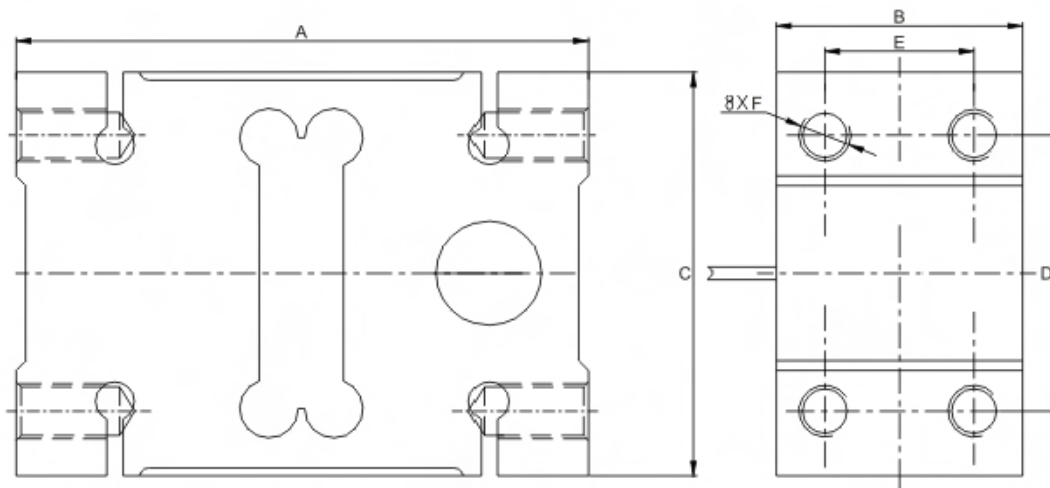


额定载荷(kg) Rated Load	A	B	C	D	E	F
50 ~ 200	156	44	75	50	24	M12
300 ~ 500	146	60	95	70	36	M12
750 ~ 2000	176	76	125	95	46	M16



台秤、各种压式测力装置

Platform scale, all kinds of compression testing devices

TECHNICAL PARAMETER

4Wires: Exc+(红, Red); Exc-(黑, Black); Sig+(绿, Green); Sig-(白, White)

额定载荷 Rated capacities(Emax)	50,100,200,300,500,750kg;1t,2t;	温度补偿范围 Temperature range, compensated	-10℃~+40℃
灵敏度 Sensitivity	2.0±0.2mV/V	工作温度范围 Temperature range, operating	-20℃~+50℃
精度等级 Accuracy class	±0.03%F.S	安全过载 Maximum safe overload	150%Emax
蠕变(30分钟)Creep error (30min)	±166ppm	极限过载 Ultimate overload	300%Emax
零点平衡 Zero balance	±3%Emax	推荐激励电压 Excitation, recommended	10V DC
零点温度影响 TC ZERO	±17.5ppm/℃	最大激励电压 Excitation, maximum	15V DC
输出温度影响 TC SPAN	+20℃~+40℃, ±17.5ppm/℃	防封等级 Protection class	IP65
	-10℃~+20℃, ±11.67ppm/℃	材质 Construction	铝合金Aluminium
输入阻抗 Input resistance	404 ± 15Ω	电缆 Cable	Length:5m
输出阻抗 Output resistance	350 ± 3Ω		Diameter: φ 5mm
绝缘电阻 Insulation resistance	≥2000 MΩ (50V DC)	推荐安装力矩 Installation torque, recommended	35N·m
推荐安装台面 Max. platform size	50 ~ 200kg 600 × 600mm	300 ~ 500kg 600 × 800mm	750 ~ 2000kg 1200 × 1200mm