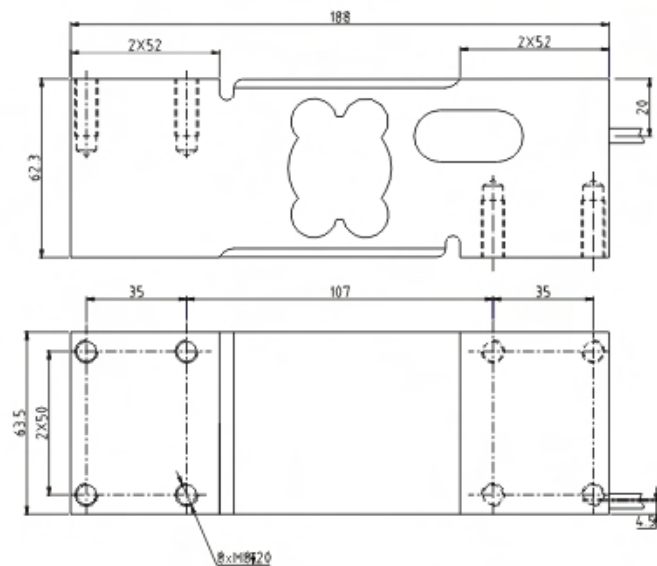


台秤、各种压式测力场合  
Platform scale, compression testing situations



## TECHNICAL PARAMETER

4Wires:Exc+(红,Red);Exc-(黑,Black);Sig+(绿,Green);Sig-(白,White)

额定载荷 Rated capacities(Emax)	50,75,100,150,200,250,300,500,635,750,800kg;1t	温度补偿范围 Temperature range, compensated	-10℃~+40℃
灵敏度 Sensitivity	2.0±0.2mV/V	工作温度范围 Temperature range, operating	-20℃~+50℃
精度等级 Accuracy class	OIML C3	安全过载 Maximum safe overload	150%Emax
蠕变(30分钟)Creep error (30min)	±166ppm	极限过载 Ultimate overload	300%Emax
零点平衡 Zero balance	±3%Emax	推荐激励电压 Excitation,recommended	10V DC
零点温度影响 TC ZERO	±17.5ppm/℃	最大激励电压 Excitation,maximum	15V DC
输出温度影响 TC SPAN	+20℃~+40℃, ±17.5ppm/℃ -10℃~+20℃, ±11.67ppm/℃	防封等级 Protection class	IP65
输入阻抗 Input resistance	404±15Ω	材质 Construction	铝合金Aluminium
输出阻抗 Output resistance	350±3Ω	电缆Cable	Length:1.8m Diameter: φ5mm
绝缘电阻 Insulation resistance	≥2000 MΩ (50V DC)	推荐安装力矩 Installation torque,recommended	25N·m
推荐安装台面 Max. platform size	600×800mm		