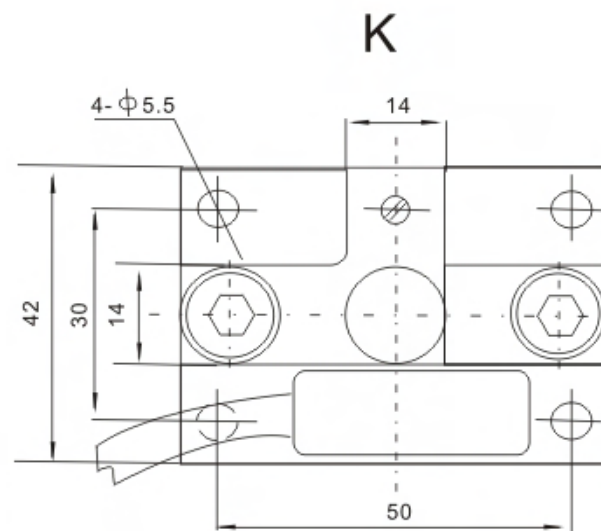
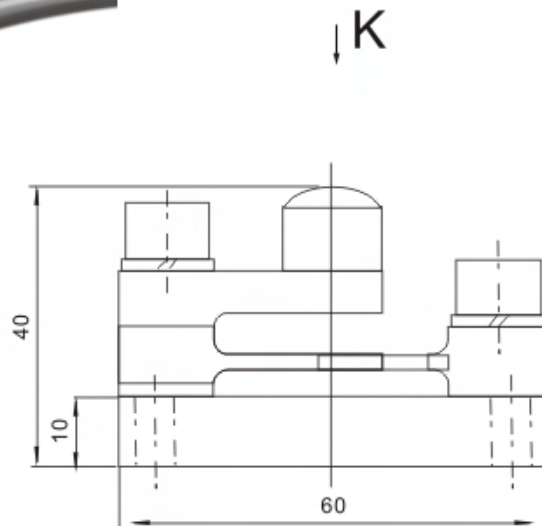


各种张力控制、过程控制
Tension control, process control



TECHNICAL PARAMETER

4Wires:Exc+(紫, Purple);Exc-(黑, Black);Sig+(灰, Gray);Sig-(白, White)

额定载荷 Rated capacities(Emax)	15,30,45,60,100,150kg	温度补偿范围 Temperature range, compensated	-10°C~+40°C
灵敏度 Sensitivity	2.0±0.005mV/V	工作温度范围 Temperature range, operating	-30~+70°C
综合误差 Total error	±0.1%F.S	安全过载 Maximum safe overload	120%F.S
蠕变(30分钟)Creep error (30min)	±0.05%F.S	极限过载 Ultimate overload	150%F.S
零点平衡 Zero balance	±1%F.S	推荐激励电压 Excitation,recommend	10~12V DC
零点温度影响 TCO	±0.02%F.S/10°C	最大激励电压 Excitation,maximum	15V DC
输出温度影响 TC SPAN	±0.02%F.S/10°C	防封等级 Protection class	IP65
输入阻抗 Input impedance	400Ω	材质 Construction	合金钢Alloy Steel
输出阻抗 Output impedance	352±3Ω	电缆 Cable	Length:30cm(排线)
绝缘电阻 Insulation impedance	≥5000MΩ		