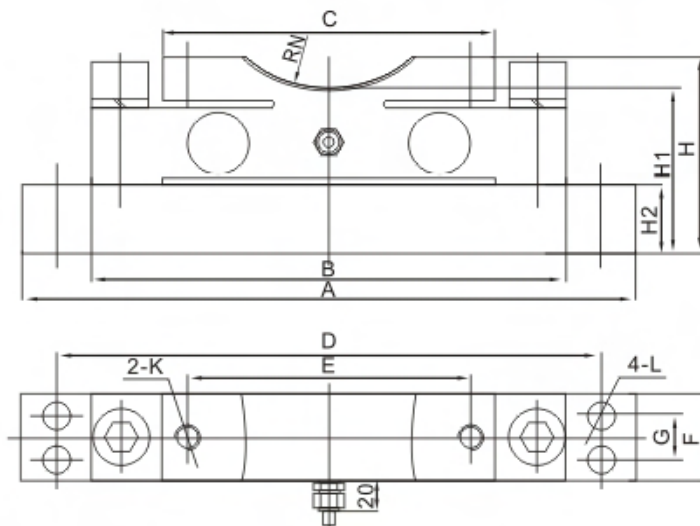


钢包秤、天车秤

Steel embody scale, overhead crane scale



额定载荷(t) Rated Load	A	B	C	D	E	F	G	H	H1	H2	K	L	RN	安装轴径 Install axle diameter
10,15,20,30	390	300	210	345	180	56	29	127	107	45	M16	φ 18	R80	φ 60~φ 150
40,50,60	500	395	235	445	200	86	45	173	153	67	M20	φ 22	R90	φ 80~φ 170

## TECHNICAL PARAMETER | 4Wires:Exc+(红,Red);Exc-(黑,Black);Sig+(绿,Green);Sig-(白,White)

额定载荷 Rated capacities(E <sub>max</sub> )	10, 15, 20, 30, 40, 50, 60t	温度补偿范围 Temperature range, compensated	-10℃~+40℃
灵敏度 Sensitivity	2.0±0.01mV/V(10~30t); 1.5±0.01mV/V(40~60t)	工作温度范围 Temperature range, operating	-30~+70℃
综合误差 Total error	±0.1%F.S	安全过载 Maximum safe overload	150%F.S
蠕变(30分钟)Creep error (30min)	±0.03%F.S	极限过载 Ultimate overload	300%F.S
零点平衡 Zero balance	±1%F.S	推荐激励电压 Excitation, recommend	10~12V DC
零点温度影响 TCO	±0.03%F.S/10℃	最大激励电压 Excitation, maximum	15V DC
输出温度影响 TC SPAN	±0.03%F.S/10℃	防封等级 Protection class	IP68
输入阻抗 Input impedance	750±10Ω	材质 Construction	合金钢 Alloy Steel
输出阻抗 Output impedance	702±3Ω, 702±5Ω (L≥15m)	电缆 Cable	Length=L: 8m(10t), 10m(15t), 12m(20t), 16m(30~60t)
绝缘电阻 Insulation impedance	≥5000MΩ		Diameter: φ 6mm