

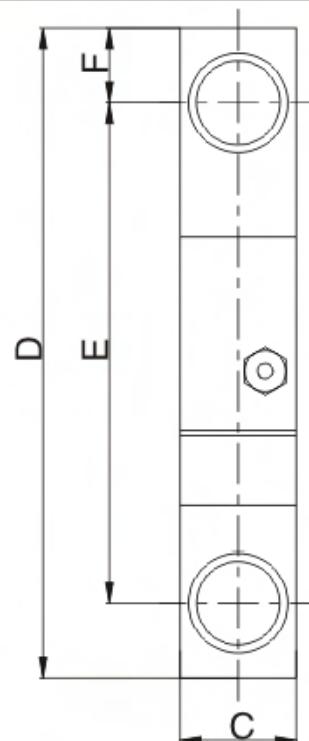
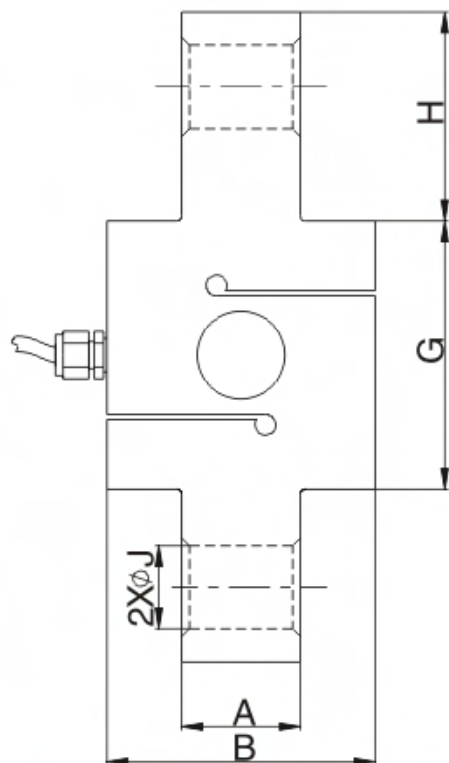
# DGBB-A Load cell

DGBB-A



吊钩秤  
Crane scale

量程	A	B	C	D	E	F	G	H	J
2~3t	26	80	42	166	132	17	80	43	20
6t	36	104	42	222	176	23	92	65	26
10t	46	104	42	252	194	29	104	81	32.5



## TECHNICAL PARAMETER

4Wires:Exc+(红,Red);Exc-(黑,Black);Sig+(绿,Green);Sig-(白,White)

额定载荷 Rated load	2,3,6,10t	工作温度范围 Operating Temp Range	-30 ~ +70°C
灵敏度 Sensitivity	2.0 ± 0.01mV/V	安全过载 Safe load limit	150%F.S
综合误差 Total error	± 0.05%F.S	极限过载 Lateral load limit	200%F.S
蠕变 (30分钟) Creep(30min)	± 0.03%F.S	推荐激励电压 Recommend excitation	10 ~ 12V DC
零点平衡 Zero balance	± 1%F.S	最大激励电压 Maximum excitation	15V DC
零点温度影响 TCO	± 0.02%F.S/10°C	密封等级 Protection Class	IP67
输出温度影响 TC SPAN	± 0.02%F.S/10°C	材质 Construction	合金钢 Alloy Steel
输入阻抗 Input resistance	400 ± 20 Ω	电缆 Cable	Length: 2m
输出阻抗 Output resistance	352 ± 3 Ω		Diameter: φ6mm
绝缘电阻 Insulation resistance	≥ 5000M Ω		