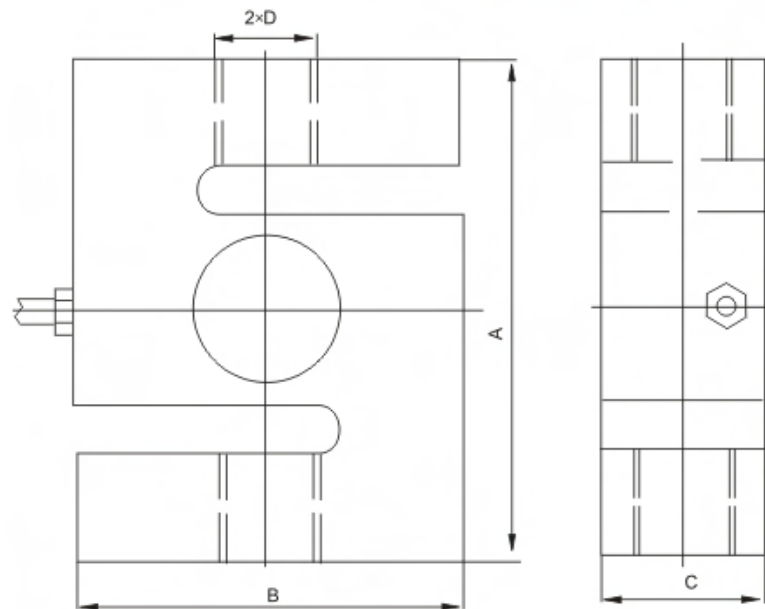


额定载荷(klb) Rated Load	A	B	C	D
10	101.6	76.2	25.4	3/4-16UNF-2B
15	139.7	101.6	31.8	1-14UNS-2B



吊钩秤、皮带秤、配料系统

Crane scale, belt scale, blending system

TECHNICAL PARAMETER

4Wires: Exc+(红, Red); Exc-(黑, Black); Sig+(绿, Green); Sig-(白, White)

额定载荷 Rated capacities(E _{max})	10, 15klb	温度补偿范围 Temperature range, compensated	-10°C~+40°C
灵敏度 Sensitivity	3.0±0.003mV/V	工作温度范围 Temperature range, operating	-30~+70°C
综合误差 Total error	±0.03%F.S	安全过载 Maximum safe overload	120%F.S
蠕变(30分钟) Creep error (30min)	±0.03%F.S	极限过载 Ultimate overload	150%F.S
零点平衡 Zero balance	±1%F.S	推荐激励电压 Excitation, recommend	10~12V DC
零点温度影响 TCO	±0.03%F.S/10°C	最大激励电压 Excitation, maximum	15V DC
输出温度影响 TC SPAN	±0.03%F.S/10°C	防封等级 Protection class	IP67
输入阻抗 Input impedance	400±20Ω	材质 Construction	合金钢 Alloy Steel
输出阻抗 Output impedance	352±3Ω	电缆 Cable	Length: 8m
绝缘电阻 Insulation impedance	≥5000MΩ		Diameter: φ 5.4mm