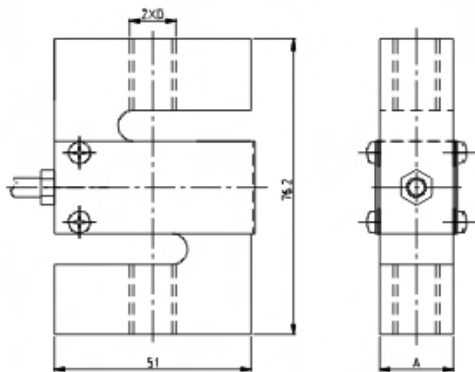
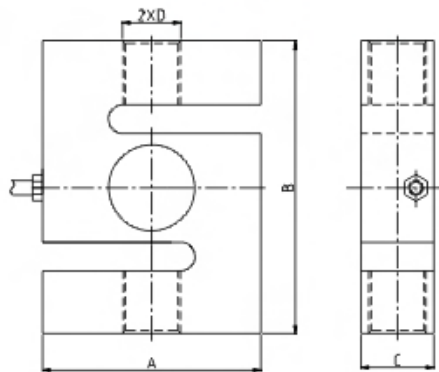


吊钩秤、皮带秤、配料系统
Crane scale, belt scale, blending system

250lb~3klb



5klb~20klb



| 量程 | A | D |
|--------------|------|---------------|
| 250lb~300lb | 12.4 | 3/8-24 UNF-2B |
| 500lb~1.5klb | 19.1 | 1/2-20 UNF-2B |
| 2~3klb | 25.4 | 1/2-20 UNF-2B |

| 量程 (klb) | A | B | C | D |
|----------|------|-------|------|-----------------|
| 5~7.5 | 76.2 | 107.9 | 25.4 | 3/4-16 UNF-2B |
| 10 | 88.9 | 120.7 | 25.4 | 3/4-16 UNF-2B |
| 20 | 127 | 178 | 51 | 1 1/4 -12UNF-2B |

TECHNICAL PARAMETER | 4Wires:Exc+(红,Red);Exc-(黑,Black);Sig+(绿,Green);Sig-(白,White)

| | | | |
|--|--|---------------------------------------|------------------------------------|
| 额定载荷 Rated capacities(E _{max}) | 250,300,500,750lb;1,1.5,2,2.5,3,5,7.5,10,20klb | 温度补偿范围 Temperature range, compensated | -10°C~+40°C |
| 灵敏度 Sensitivity | 3.0±0.003mV/V | 工作温度范围 Temperature range, operating | -30~+70°C |
| 综合误差 Total error | ±0.03%F.S | 安全过载 Maximum safe overload | 120%F.S |
| 蠕变(30分钟)Creep error (30min) | ±0.03%F.S | 极限过载 Ultimate overload | 150%F.S |
| 零点平衡 Zero balance | ±1%F.S | 推荐激励电压 Excitation,recommend | 10~12V DC |
| 零点温度影响 TCO | ±0.03%F.S/10°C | 最大激励电压 Excitation,maximum | 15V DC |
| 输出温度影响 TC SPAN | ±0.03%F.S/10°C | 防封等级 Protection class | IP65(250lb~3klb);IP67(5~20klb) |
| 输入阻抗 Input impedance | 400±20Ω | 材质 Construction | 合金钢Alloy Steel, 不锈钢Stainless Steel |
| 输出阻抗 Output impedance | 352±3Ω | 电缆 Cable | Length:5m |
| 绝缘电阻 Insulation impedance | ≥5000MΩ | | Diameter: φ 5mm |