

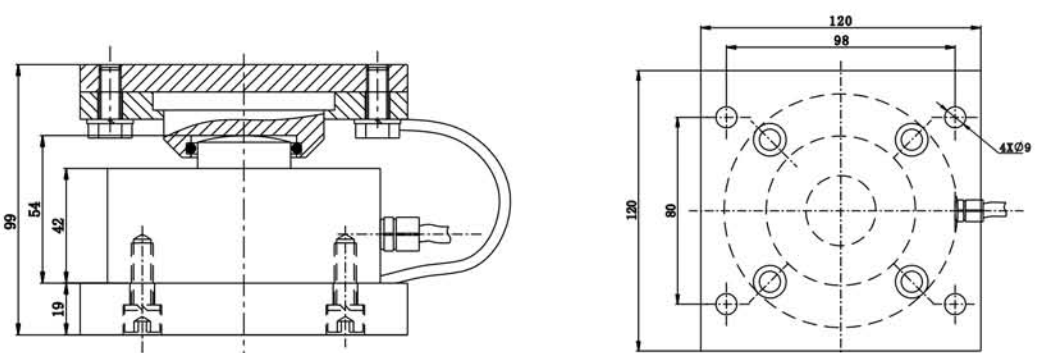
YBS-A/ASS STATIC WEIGHING MODULE TYPE C



Description

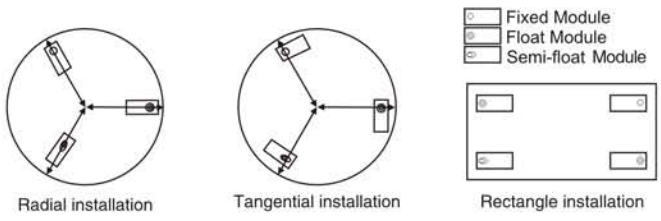
Capacity	1 - 10
Sensitivity	2.0 ± 0.005mV/V
Accuracy	0.08%F.S
Construction	Alloy Steel/Stainless Steel
Protection Class	IP68

Dimensions (Unit: mm)

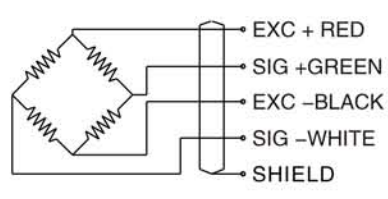


Capacity (t)	H	H1	H2	H3	H4	L1	L2	L3
1 - 10	120	21	19	42	54	120	98	80

Install Methods



Wiring Diagram



Applications

1. Applies to warehouse scale, hopper scale etc

Features

1. Welded seal, high protection class

Technical Parameter

Sensitivity:	2.0 ± 0.005mV/V	Output impedance:	702 ± 3Ω
Accuracy class:	0.08%F.S	Operating temperature range:	-30°C~+70°C
Repeatability:	0.02%F.S	Maximum safe overload:	120% F.S
Creep error (30 min):	0.02%F.S	Insulation impedance:	5000MΩ
TCO:	0.02%F.S%F.S/10°C	Excitation, recommend:	10V DC (15V Max.)
TC SPAN:	0.02%F.S%F.S/10°C	Construction	Alloy Steel/Stainless Steel
Input impedance:	750 ± 10Ω	Protection class	IP68