

# 110BHM3

## Alloy Steel



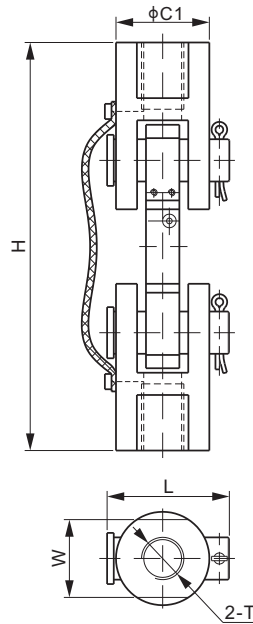
### Features:

- Assembles: 110BH tension link load cell
- Capacities: 500kg-10t
- Self-checking
- Tension loading design with no threaded bolt connection in between

Load Cell Certifications:



Load Cell Not Included.



### DIMENSIONS

LOAD CELL CAPACITY	C1	H	L	W	T
<b>kg/mm</b>					
500-1,000	35	125	46	27	1/2-20 UNF Depth20
2,000	45	184	57	35	3/4-16 UNF Depth30
5,000	65	216	77	52	1-14 UNS Depth30
10,000	85	296	98	55	1-1/2-12UNF Depth45
<b>lb/inches</b> (conversion of above dimensions)					
1102.3-2,202.6	1.38	4.92	1.81	1.06	1/2-20 UNF Depth0.79
4,405.3	1.77	7.24	2.24	1.38	3/4-16 UNF Depth1.18
11,013.2	2.56	8.50	3.03	2.05	1-14 UNS Depth1.18
22,026.4	3.35	11.65	3.86	2.16	1-1/2-12UNF Depth1.77

### PART NUMBER

Load Cell Capacity	Part No.	Shipping Weight (kg) Approx.
500kg-1t.....	110BHM3-(0.5-1)t.....	0.6
2t.....	110BHM3-2t.....	1.2
5t.....	110BHM3-5t.....	3.0
10t.....	110BHM3-10t.....	6.4

WEIGH MODULES