

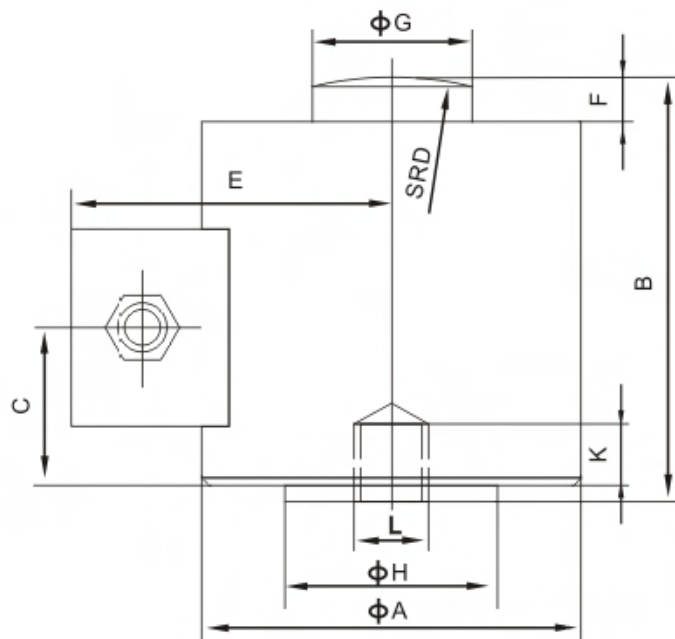
ZSE-A Loadcell

ZSE-A



实验机设备及各种专用衡器
Testing equipment and special scale

| 额定载荷(t) Rated Load | A | B | C | D | E | F | G | H | K | L |
|-----------------------|-----|------|-----|-----|-------|------|------|-----|----|-----|
| 20 | 76 | 82.6 | 48 | 150 | 56 | 9 | 31.8 | 48 | 10 | M12 |
| 25 | 100 | 117 | 65 | 150 | 76 | 12 | 38 | 38 | 14 | M20 |
| 30 | 100 | 117 | 65 | 150 | 76 | 12 | 38 | 38 | 10 | M12 |
| 40 | 100 | 117 | 65 | 150 | 76 | 12 | 38 | 38 | 14 | M20 |
| 50,60 | 107 | 127 | 66 | 200 | 81 | 12.7 | 58 | 64 | 14 | M20 |
| 70 | 125 | 142 | 91 | 250 | 86.5 | 13 | 58 | 64 | 14 | M20 |
| 100 | 165 | 184 | 104 | 300 | 111.8 | 20 | 70 | 70 | 20 | M20 |
| 150 | 165 | 184 | 104 | 300 | 111.8 | 20 | 70 | 78 | 20 | M20 |
| 200 | 223 | 250 | 152 | 500 | 137.5 | 20 | 100 | 112 | 36 | M24 |
| 300,400 | 223 | 250 | 152 | 500 | 137.5 | 20 | 108 | 112 | 36 | M24 |



TECHNICAL PARAMETER

6Wires:Exc+(红,Red);Exc-(黑,Black);Sig+(绿,Green);Sig-(白,White);Sen+(蓝,Blue);Sen-(黄,Yellow)

| | | | |
|-----------------------------|--|---------------------------------------|---|
| 额定载荷 Rated capacities(Emax) | 20,25,30,40,50,60,70,100,150,200,300 ,400t | 温度补偿范围 Temperature range, compensated | -10°C~+40°C |
| 灵敏度 Sensitivity | 2.0±0.002mV/V | 工作温度范围 Temperature range, operating | -30~+70°C |
| 综合误差 Total error | ±0.03%F.S.(20~60t);±0.05%F.S (70~100t) ±0.1%F.S.(150~400t) | 安全过载 Maximum safe overload | 150%F.S |
| 蠕变(30分钟)Creep error (30min) | ±0.03%F.S | 极限过载 Ultimate overload | 200%F.S |
| 零点平衡 Zero balance | ±1%F.S | 推荐激励电压 Excitation,recommend | 10~12V DC |
| 零点温度影响 TCO | ±0.02%F.S/10°C | 最大激励电压 Excitation,maximum | 15V DC |
| 输出温度影响 TC SPAN | ±0.02%F.S/10°C | 防封等级 Protection class | IP68 |
| 输入阻抗 Input impedance | 400±20Ω | 材质 Construction | 合金钢Alloy Steel |
| 输出阻抗 Output impedance | 352±3Ω;352±5Ω(L≥15m) | 电缆 Cable | LengthL:12m(20t),14m(25~40t),16m(50~150t),20m(200~400t) |
| 绝缘电阻 Insulation impedance | ≥5000MΩ | | Diameter: φ 8mm ; 6mm (20t) |