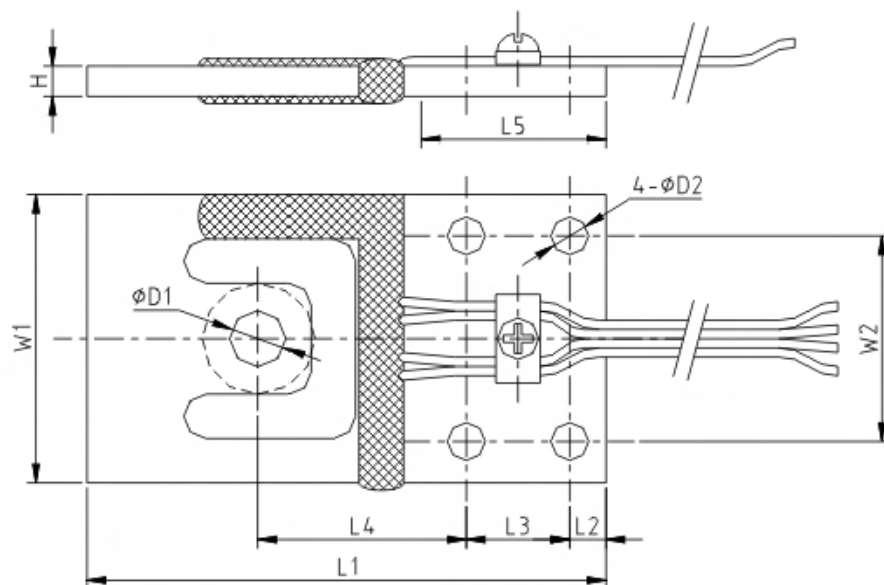


电梯、小平台秤、人体秤；  
Elevator small platform scales, healthy scales

量程 (kg)	L1	L2	L3	L4	L5	W1	W2	H	φ D1	φ D2
3.75								2		
7.5	70	4.9	14	28	23.7	39	27.8	2.5	5.1	5.1
15								4.1		
37.5	76.2	6	15	29.3	27	44.5	30	4.8	7.6	6.6
75	84.4	6.4		34	27.7	54.8		6.4		
150	107.3	7.8	22.9	45.9	38.4	69.9	44.5	7.9	9.1	8.1
375	119.4	9.1	25.4	52.6	43.7	76.1	50.8	12.7		9.8



## TECHNICAL PARAMETER

4Wires:Exc+(红,Red);Exc-(黑,Black);Sig+(绿,Green);Sig-(白,White)

额定载荷 Rated load	3.75,7.5,15,37.5,75,150,375kg	绝缘电阻 Insulation resistance	$\geq 2000M\Omega$ (50V DC)
灵敏度 Sensitivity	$1.0 \pm 0.2mV/V$	工作温度范围 Operating Temp Range	$-20 \sim +50^{\circ}C$
精度等级 Accuracy class		安全过载 Safe load limit	150%F.S
蠕变 (30分钟) Creep(30min)	$\pm 166ppm$	极限过载 Lateral load limit	300%F.S
零点平衡 Zero balance	$\pm 3\%E_{max}$	推荐激励电压 Recommend excitation	10V DC
零点温度影响 TCO	$\pm 17.5ppm/^{\circ}C$	最大激励电压 Maximum excitation	15V DC
输出温度影响 TC SPAN	$+20^{\circ}C \sim +40^{\circ}C, \pm 17.5ppm/^{\circ}C$	密封等级 Protection Class	IP65
	$-10^{\circ}C \sim +20^{\circ}C, \pm 11.67ppm/^{\circ}C$	材质 Construction	铝合金 Aluminium
输入阻抗 Input resistance	$1220 \pm 15\Omega$	电缆 Cable	Length:0.5m
输出阻抗 Output resistance	$1000 \pm 5\Omega$		Diameter:(排线 flat cable)
推荐安装平台 Max.platform size		推荐安装力矩 Installation torque,commended	10N · m