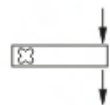
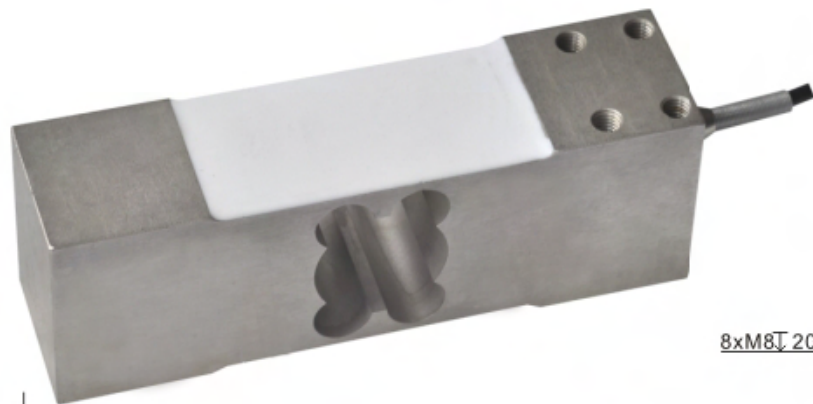
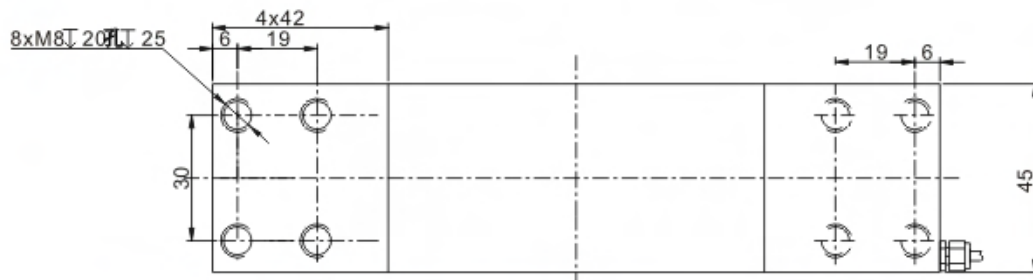
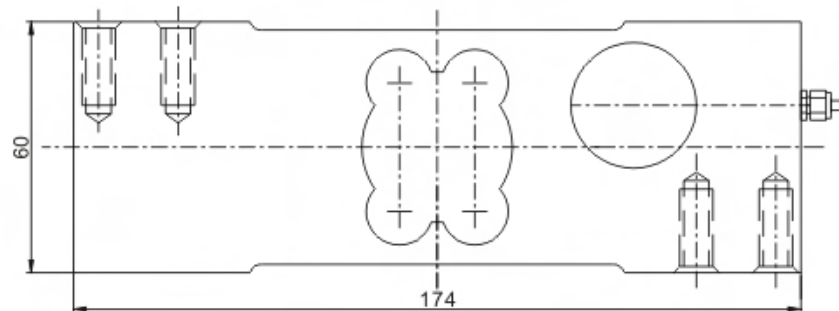


# ILE(-SS) Load cell

ILE(-SS)



台秤、各种压式测力装置  
Platform scale, all kinds of compression testing devices



## TECHNICAL PARAMETER

4Wires:Exc+(红,Red);Exc-(黑,Black);Sig+(绿,Green);Sig-(白,White)

额定载荷 Rated load	40,45,50,60,65,100,150,200,250,300,500,800kg	绝缘电阻 Insulation resistance	$\geq 2000M\Omega$ (50V DC)
灵敏度 Sensitivity	$20 \pm 0.2mV/V$	工作温度范围 Operating Temp Range	$-20 \sim +50^{\circ}C$
精度等级 Accuracy class	OIML C3(approving)	安全过载 Safe load limit	150%F.S
蠕变 (30分钟) Creep(30min)	$\pm 166ppm$	极限过载 Lateral load limit	300%F.S
零点平衡 Zero balance	$\pm 3\%E_{max}$	推荐激励电压 Recommend excitation	10V DC
零点温度影响 TCO	$\pm 17.5ppm/^{\circ}C$	最大激励电压 Maximum excitation	15V DC
输出温度影响 TC SPAN	$+20^{\circ}C \sim +40^{\circ}C, \pm 17.5ppm/^{\circ}C$	密封等级 Protection Class	IP65
	$-10^{\circ}C \sim +20^{\circ}C, \pm 11.67ppm/^{\circ}C$	材质 Construction	合金钢 Alloy Steel 不锈钢 Stainless Steel
输入阻抗 Input resistance	$404 \pm 15\Omega$	电缆 Cable	Length:3m
输出阻抗 Output resistance	$382 \pm 3\Omega$		Diameter: $\phi 5mm$
推荐安装平台 Max.platform size	$500 \times 500mm$	推荐安装力矩 Installation torque, commended	25N · m