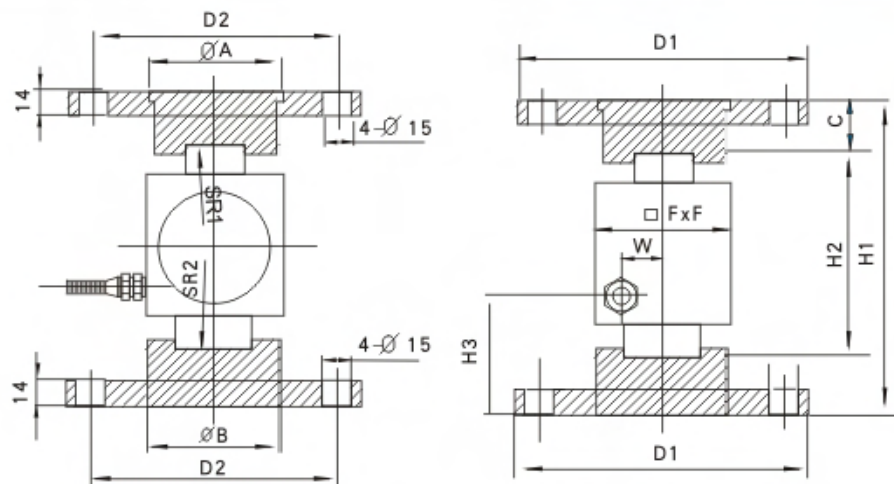
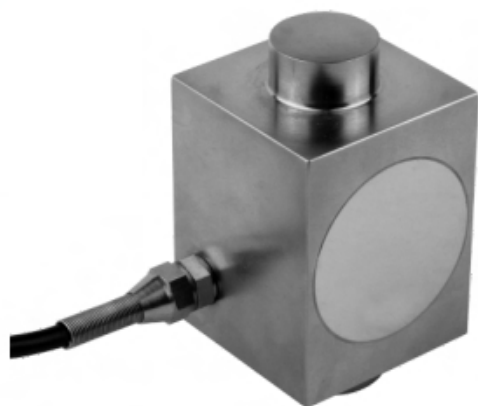


HR Loadcell

HR



汽车衡、静态料斗秤
Truck scale,static hopper scale

Capacity 量程(t)	size 尺寸	H1	H2	H3	W	D1	D2	C	A	B	F	SR1	SR2
5~30t		140	100	50	13.5	φ 130	φ 105	20	64	60	56	150	150
40~50t		168	110	63	20	φ 155	φ 130	29	70	70	74	180	180

TECHNICAL PARAMETER

4Wires:Exc+(红,Red);Exc-(黑,Black);Sig+(绿,Green);Sig-(白,White)

额定载荷 Rated capacities(Emax)	5,10,20,30,40,50t	温度补偿范围 Temperature range, compensated	-10℃~+40℃
灵敏度 Sensitivity	2.0±0.005mV/V	工作温度范围 Temperature range, operating	-30~+70℃
综合误差 Total error	±0.05%F.S	安全过载 Maximum safe overload	150%F.S
蠕变(30分钟)Creep error (30min)	±0.03%F.S	极限过载 Ultimate overload	200%F.S
零点平衡 Zero balance	±1%F.S	推荐激励电压 Excitation,recommend	10~12V DC
零点温度影响 TCO	±0.03%F.S/10℃	最大激励电压 Excitation,maximum	15V DC
输出温度影响 TC SPAN	±0.03%F.S/10℃	防封等级 Protection class	IP67
输入阻抗 Input impedance	400±20Ω	材质 Construction	合金钢Alloy Steel
输出阻抗 Output impedance	352±3Ω;352±5Ω(L≥15m)	电缆 Cable	Length=L:8m(5~10t),12m(20~30t),16m(40~50t)
绝缘电阻 Insulation impedance	≥5000MΩ		Diameter: φ 6mm