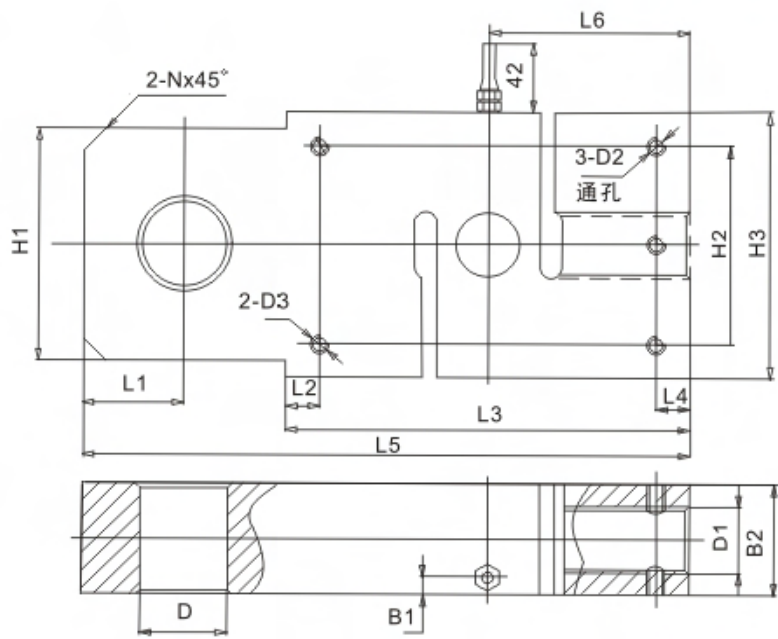


吊钩秤
Crane scale

额定载荷(t) Rated Load	L1	L2	L3	L4	L5	L6	H1	H2	H3	B1	B2	D1	D2	D3	D	N
1, 3, 5	28	10	130	10	190	65	54	50	70	7.5	30	M18	M6	M8	Φ27	6
7.5, 10, 15	45	15	180	15	270	90	105	90	120	10	50	M30	M8	M8	Φ39	10



TECHNICAL PARAMETER

4Wires:Exc+(红,Red);Exc-(黑,Black);Sig+(绿,Green);Sig-(白,White)

额定载荷 Rated capacities(Emax)	1,3,5,7.5,10,15t	温度补偿范围 Temperature range, compensated	-10°C~+40°C
灵敏度 Sensitivity	1.8±0.1mV/V	工作温度范围 Temperature range, operating	-30~+70°C
综合误差 Total error	±0.03, ±0.05%F.S	安全过载 Maximum safe overload	120%F.S(1~5t), 150%F.S(7.5~15t)
蠕变(30分钟)Creep error (30min)	±0.03%F.S	极限过载 Ultimate overload	200%F.S
零点平衡 Zero balance	±1%F.S	推荐激励电压 Excitation, recommend	10~12V DC
零点温度影响 TCO	±0.02%F.S/10°C	最大激励电压 Excitation, maximum	15V DC
输出温度影响 TC SPAN	±0.02%F.S/10°C	防封等级 Protection class	IP67
输入阻抗 Input impedance	400±20Ω	材质 Construction	合金钢 Alloy Steel
输出阻抗 Output impedance	352±3Ω	电缆 Cable	Length:0.5m
绝缘电阻 Insulation impedance	≥5000MΩ		Diameter: φ 5mm