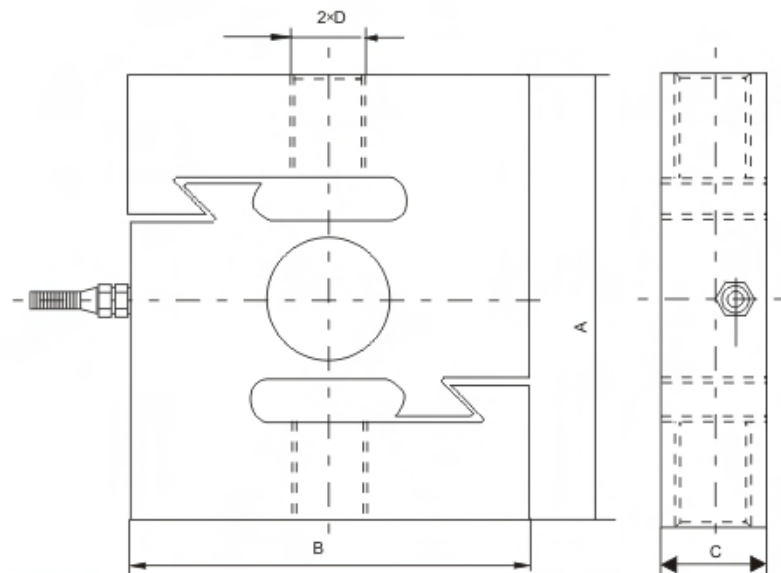


额定载荷(t) Rated Load	A	B	C	D
0.05,0.1,0.2,0.25 0.3,0.5,0.75	80	70	19	M12
1,1.5	80	70	25	M12
2,3.5	108	95	25	M18x1.5
7.5,10	178	130	51	M30x2
15,20	190	160	60	M39x2



吊钩秤、配料秤、包装秤、机电结合秤及专用测力装置  
Crane scale,blending scale,packing scale,electromechanical scale,special testing device

## TECHNICAL PARAMETER

4Wires:Exc+(红,Red);Exc-(黑,Black);Sig+(绿,Green);Sig-(白,White)

额定载荷 Rated capacities(E <sub>max</sub> )	0.05,0.1,0.2,0.25,0.3,0.5,0.75,1 1.5,2,3,5,7.5,10,15,20t	温度补偿范围 Temperature range, compensated	-10℃~+40℃
灵敏度 Sensitivity	2.0±0.002mV/V	工作温度范围 Temperature range, operating	-30~+70℃
综合误差 Total error	±0.05%F.S	安全过载 Maximum safe overload	150%F.S
蠕变(30分钟)Creep error (30min)	±0.03%F.S	极限过载 Ultimate overload	200%F.S
零点平衡 Zero balance	±1%F.S	推荐激励电压 Excitation,recommend	10~12V DC
零点温度影响 TCO	±0.03%F.S/10℃	最大激励电压 Excitation,maximum	15V DC
输出温度影响 TC SPAN	±0.03%F.S/10℃	防封等级 Protection class	IP65(0.05~5t) IP67(7.5~20t)
输入阻抗 Input impedance	400±20Ω	材质 Construction	合金钢Alloy Steel 不锈钢Stainless Steel
输出阻抗 Output impedance	352±3Ω	电缆 Cable	Length:6m Diameter:φ5mm
绝缘电阻 Insulation impedance	≥5000MΩ		