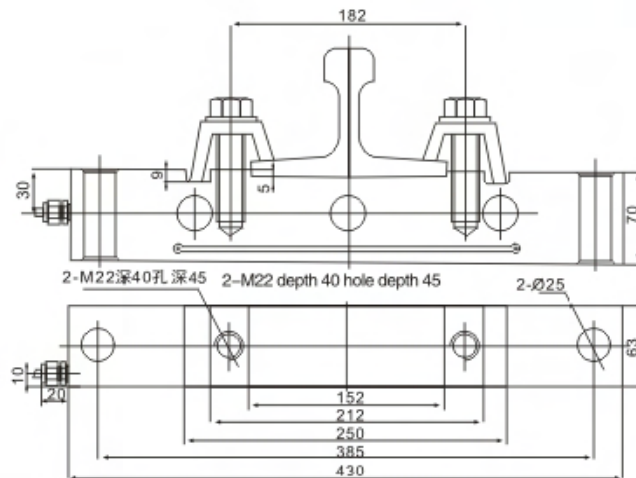


各种轨道衡  
Railway scale



## TECHNICAL PARAMETER

额定载荷 Rated capacities(E <sub>max</sub> )	12.5,20,30t	4Wires:Exc+(红,Red);Exc-(黑,Black);Sig+(绿,Green);Sig-(白,White)	温度补偿范围 Temperature range, compensated	-10℃~+40℃
灵敏度 Sensitivity	2.0±0.002 mV/V		工作温度范围 Temperature range, operating	-30~+70℃
综合误差 Total error	±0.3%F.S		安全过载 Maximum safe overload	150%F.S
蠕变(30分钟)Creep error (30min)	±0.05%F.S		极限过载 Ultimate overload	200%F.S
零点平衡 Zero balance	±1%F.S		推荐激励电压 Excitation,recommend	10~12V DC
零点温度影响 TCO	±0.02%F.S/10℃		最大激励电压 Excitation,maximum	15V DC
输出温度影响 TC SPAN	±0.05%F.S/10℃		防封等级 Protection class	IP67
输入阻抗 Input impedance	750±10Ω		材质 Construction	合金钢Alloy Steel
输出阻抗 Output impedance	702±3Ω		电缆 Cable	Length:12m
绝缘电阻 Insulation impedance	≥5000MΩ			Diameter: φ 6mm